

# Addressing the challenge of Type 2 diabetes

## Diabetes is a growing pandemic in Europe...



More than **61M people**<sup>1</sup> are living with diabetes, and the numbers are rising



Type 2 (T2) diabetes accounts for **more than 90%** of cases<sup>2</sup>



Over **1 in 3 adults**<sup>1</sup> are undiagnosed and not receiving proper care

## ...leading to serious consequences if not effectively managed

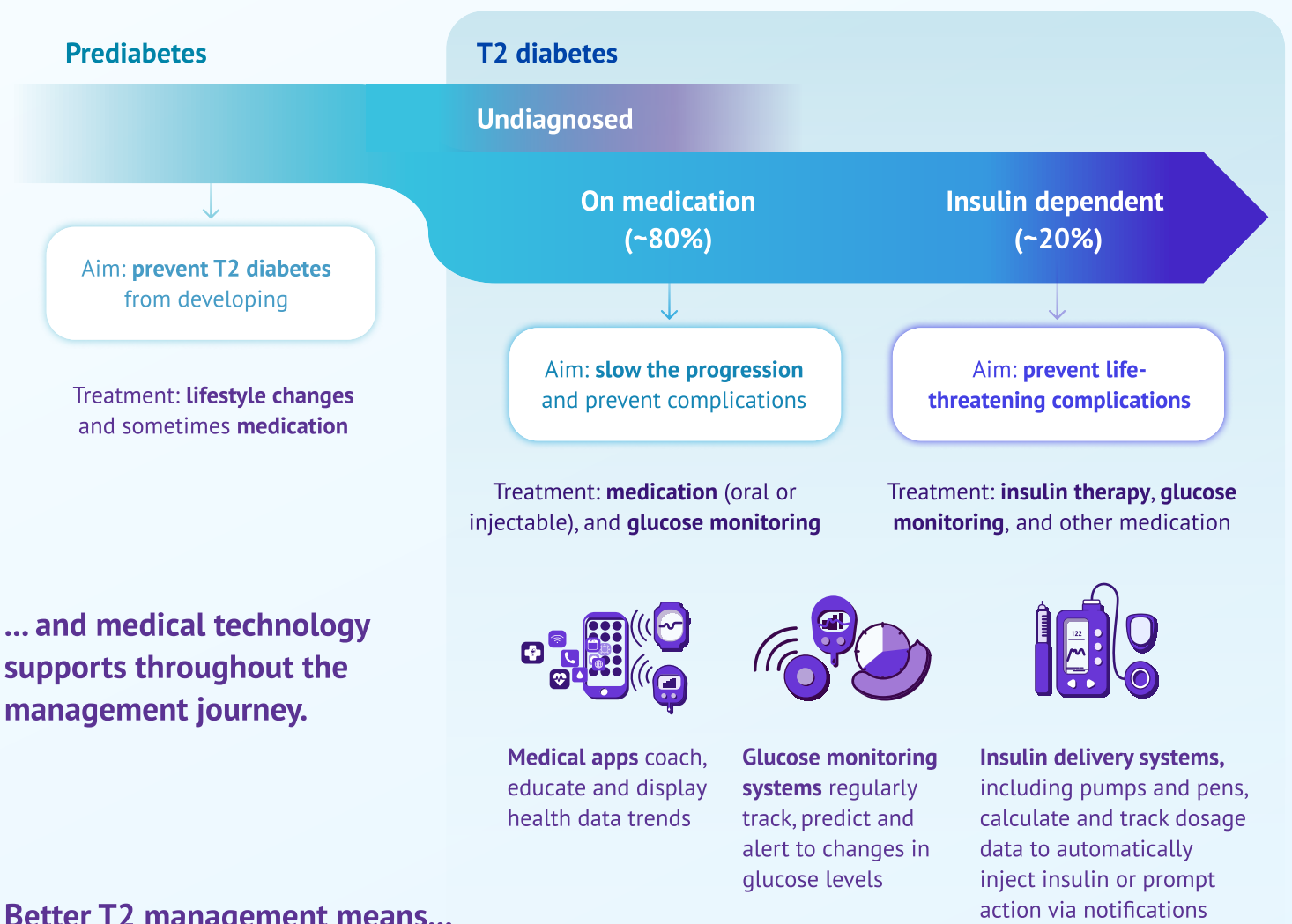


A higher risk of severe complications, such as cardiovascular events, blindness, kidney failure, and lower limb amputations<sup>3</sup>



...and more hospitalisations, which account for over half the total healthcare costs<sup>4</sup> of T2 diabetes putting further strain on health systems

## The management needs of T2 diabetes evolve as the condition progresses...



## Better T2 management means...

- ✓ **Better health outcomes**<sup>5</sup> and **higher quality of life**<sup>6</sup> for people living with diabetes
- ✓ **Fewer health emergencies and severe complications**<sup>7</sup>, including cardiovascular events
- ✓ **Better decision-making support**<sup>8</sup> for care teams and health professionals
- ✓ **Reduced strain**<sup>9</sup> on individuals, care teams, health systems and society

<sup>1</sup>Source: [IDF Factsheet](#), (2021)

<sup>2</sup>Source: Diabetes UK, ['What is Type 2 Diabetes?'](#)

<sup>3</sup>Source: WHO. [Diabetes Factsheet](#), (2021)

<sup>4</sup>Source: Jönsson, B. [Revealing the cost of Type II diabetes in Europe](#). Diabetologia 45, S5–S12. (2002)

<sup>5</sup>Source: Martens T, Beck RW, Bailey R, et al. [Effect of CGM on Glycemic Control in Patients With Type 2 Diabetes](#). JAMA 325(22). (2021)

<sup>6</sup>Source: Dodaiah, S., Shwetha, G., et al. [Medical technology intervention in improving the quality of life among the type 2 diabetes mellitus patients](#). International Journal Of Community Medicine And Public Health, 8(10), 4806-4811. (2018)

<sup>7</sup>Source: Evans M, Welsh Z, Ells S, Seibold A. [The impact of flash glucose monitoring on glycaemic control as measured by HbA1c](#). Diabetes Ther;11:83–95 (2019)

<sup>8</sup>Source: Choudhary et al. [The Challenge of Sustainable Access to Telemonitoring Tools for People with Diabetes in Europe](#). Diabetes Ther, p. 4. (2021)

<sup>9</sup>Source: Dixon, R. F., Zisser, H., Layne, J. E., et al. [A virtual type 2 diabetes clinic using CGM and endocrinology visits](#). J Diabetes Sci Technol. 14(5):908–1 (2020)

